

novacolor®
I colori dell'Architettura

Archi+ Concrete

Mineraalinen laastituote betonimaisten pintojen tekoon sisällä ja ulkona
Mineral plaster coat in powder for interiors and exteriors, for cement effects



www.novacolor.fi



novacolor.fi



ARCHI+ CONCRETE - CASA DAS FREIRAS, Lagos, Portugal
Partner: TDRV, Architect: Mario Martins, Photo: Fernando Guerra

Archi+ Concrete

IT. Intonachino minerale in polvere per interni ed esterni ad "effetto cemento"

Archi+ Concrete è un'innovativa fusione tra l'eleganza delle linee architettoniche e la solidità del cemento. L'effetto cemento consente di ottenere finiture estetiche dai colori morbidi e al contempo vibranti. La sovrapposizione di Fase Silossanica accentua il carattere materico del manufatto, trasformando la superficie minerale in un vero e proprio elemento di design. Archi+ Concrete e Archi+ Big sono prodotti in polvere da miscelare con acqua e applicare con spatola inox.

Per maggiori informazioni consultare la scheda tecnica.

EN. Mineral plaster coating with "concrete" feel for interiors and exteriors

An innovative fusion between elegant architectural lines and the solidity of concrete. The cement effect of Archi+ Concrete permits to achieve aesthetic finishes enriched by soft yet vibrant hues.

The application of Fase Silossanica, on top of Archi+ Concrete, enhances the textured effect of the product, turning the mineral surface into a real design complement.

Archi+ Concrete and Archi+ Big are products in powder form, to be mixed with water and applied with a stainless steel trowel.

For more information please check the technical data sheet.

FR. Enduit mineral en poudre pour intérieurs et extérieurs à effet «béton»

Archi+ Concrete est une fusion innovante entre l'élégance des lignes architecturales et la solidité du ciment. L'effet béton permet d'obtenir des finitions esthétiques dans des couleurs douces et en même temps dynamiques. La superposition de Fase Silossanica met en évidence la texture matérielle de la construction, transformant ainsi la surface minérale en un réel élément de design.

Archi+ Concrete et Archi+ Big sont produits en poudre à mélanger avec de l'eau et à appliquer avec une spatule en acier inoxydable.

Pour plus d'informations, voir la fiche technique.

DE. Mineralputz in Pulverform für Betonoptik, innen und außen

Archi+ Concrete ist gemäß den herkömmlichen Regeln formuliert worden. Er besteht aus Kalkhydrat, Weißzement, ausgewählten inerten Stoffen und rheologischen Modifiziermitteln, die hervorragende Verarbeitungstechnische Eigenschaften gewährleisten.

Die besondere Siebkurve des Produktes und die Überlagerung von mehreren Schichten, ermöglichen es, „Zement-ähnliche“ Effekte zu erzielen, die aus diesem Grund in den neuesten und modernen Werken des Innenraumdesigns verwendet werden.

Archi+ Concrete und Archi+ Big sind Pulverprodukte auf Mineralbasis, die mit Wasser gemischt werden müssen und dann mit einer Edelstahlkelle aufgetragen werden.

Für weitere Info bitte siehe technisches Merkblatt.

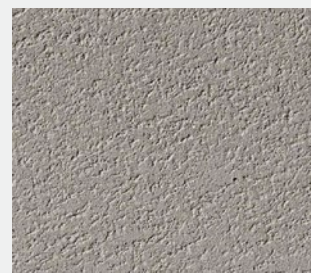




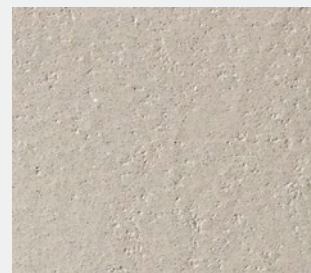
ARCHI+ BIG MM 018 & ARCHI+ CONCRETE MKS 20152 & 20154 & FASE SILOSSANICA NEUTRA



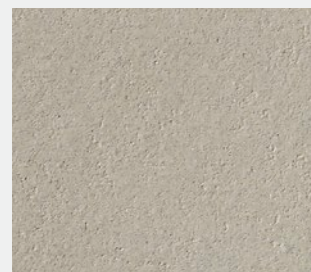
MKS 15133



MKS 20138



MKS 20154



MKS 20156



ARCHI+ CONCRETE MM010 & FASE SILOSSANICA NEUTRA & FS 6110



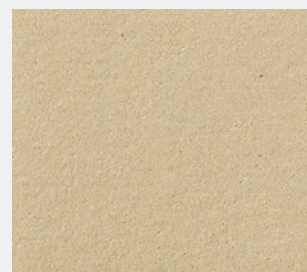
MKS 20119



MKS 20120



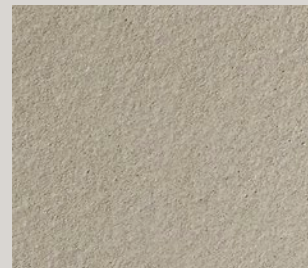
MKS 20105



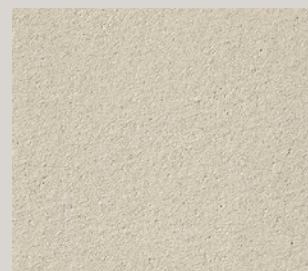
MKS 20111



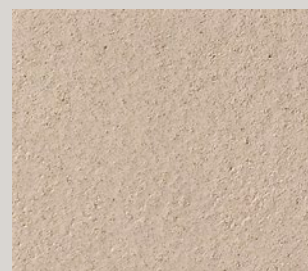
ARCHI+ BIG MM018 & FASE SILOSSANICA NEUTRA & FS 6100



MKS 20101



MKS 20109



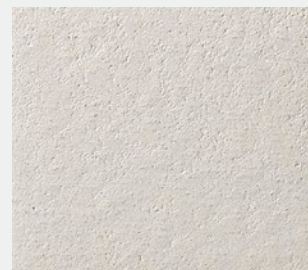
MKS 20108



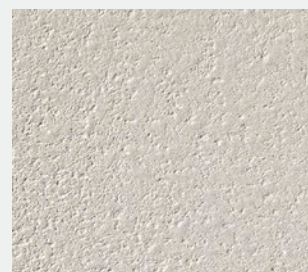
MKS 20107



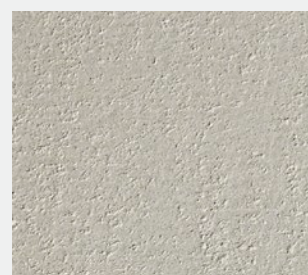
ARCHI+ CONCRETE MKS 20140 & MKS 20151 & FASE SILOSSANICA NEUTRA & FS 6207



MKS 20151



MKS 20139



MKS 20140



MKS 20152



ARCHI+ CONCRETE



Certificato Indoor Air Comfort Gold.
Indoor Air Comfort Gold certified.



Certificato A+ per le basse emissioni di sostanze volatili nell'aria
A+ Certified for the low emissions of volatile substances in the air

Le tonalità di questa cartella hanno valore puramente indicativo. The color samples in this color chart should be considered purely indicative.

Photo cover: PRIVATE HOUSE, Changhua County, Taiwan

Partner: Professional Choice - Application: Sunshine Stucco Taichung - Design: 8-Distance

novacolor[®]
I colori dell'Architettura

Novacolor Back office:
Via U. Aldrovandi 10, 47122 Forlì (FC)
Tel +39 0543 401840 - info@novacolor.it



Novacolor is committed to reduce
the environmental impact by producing
friendly materials.



AZIENDA CON
SISTEMA DI GESTIONE
CERTIFICATO DA DNV
ISO 9001 • ISO 14001

COMPANY WITH
MANAGEMENT SYSTEM
CERTIFIED BY DNV
ISO 9001 • ISO 14001

Made in Italy