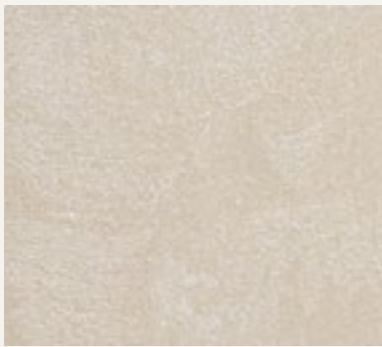


Dune Opaco

MATT METALLIC EFFECT



novacolor™
I colori dell'Architettura



DOS 16100



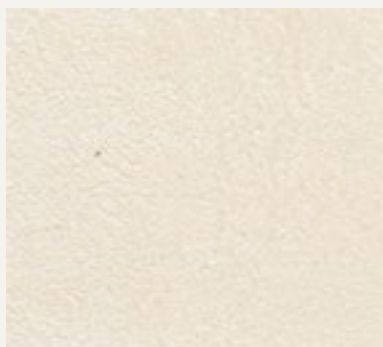
DOS 16102



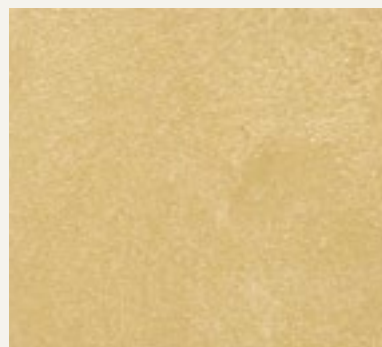
DOS 16104



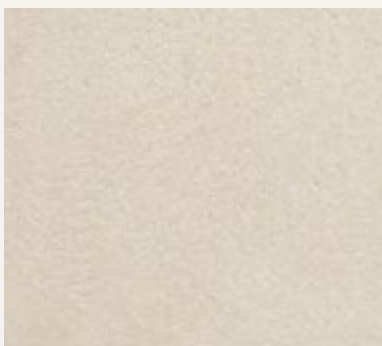
DOS 14015



DOS 16103



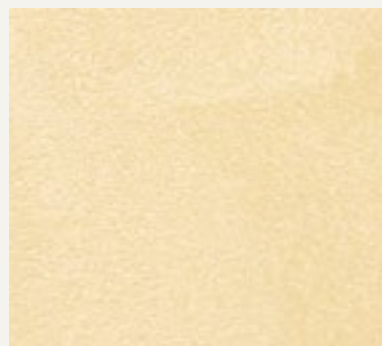
DOS 16105



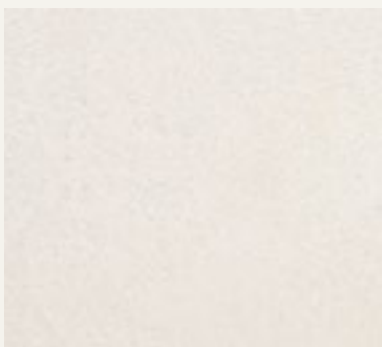
DOS 14004



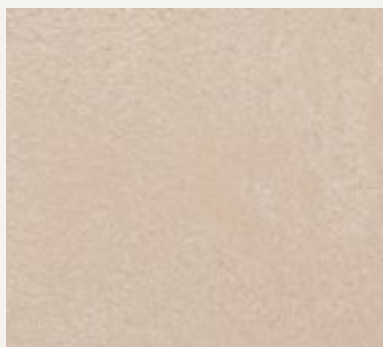
DOS 14016



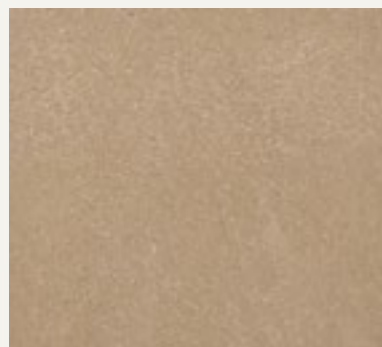
DOS 16106



DOS 16101



DOS 14017



DOS 16107



DOS 16108



DOS 16112



DOS 16116



DOS 16109



DOS 16113



DOS 16117



DOS 16110



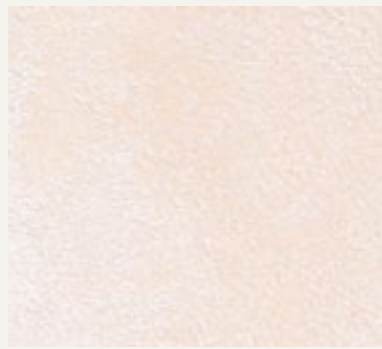
DOS 16114



DOS 16118



DOS 16111



DOS 16115



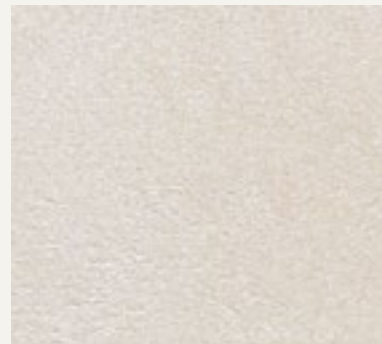
DOS 16119



DOS 16120



DOS 16124



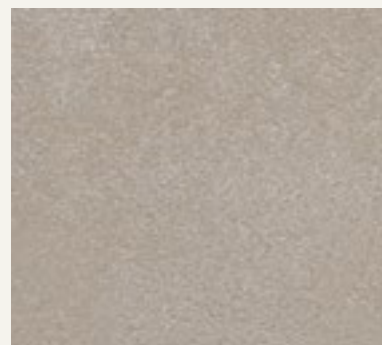
DOS 16128



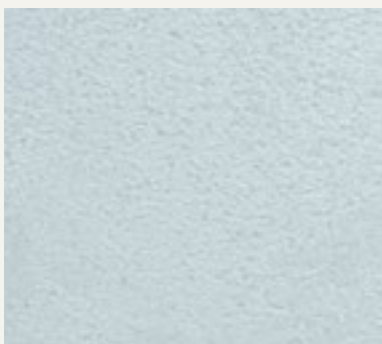
DOS 16121



DOS 16125



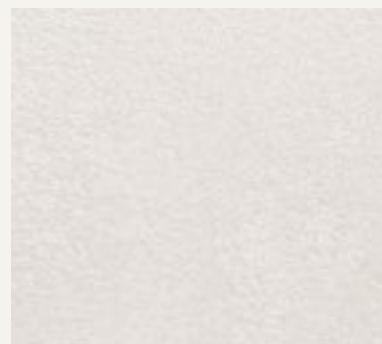
DOS 16129



DOS 16122



DOS 16126



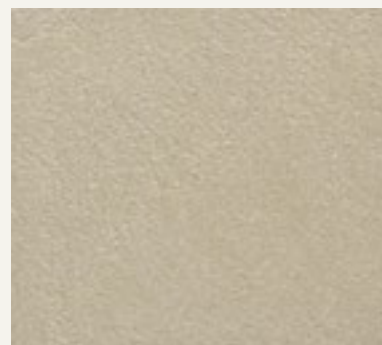
DOS 16130



DOS 16123



DOS 16127



DOS 16131





DUNE OPACO DOS 16133





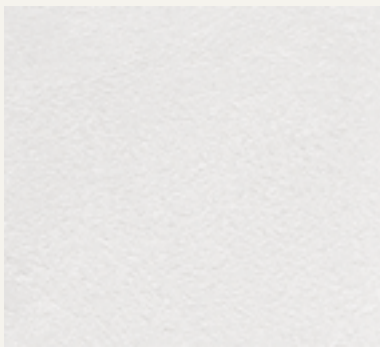
DOS 16132



DOS 16134

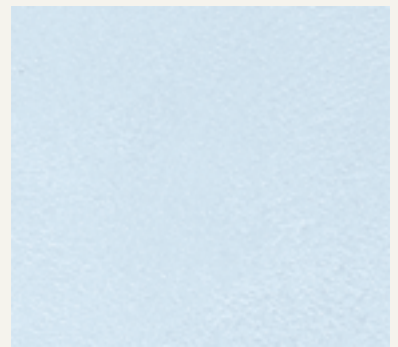


DOS 16135



BASE SILVER

*DUNE
OPACO*



DOS 16136

(IT) Rivestimento decorativo per interni ad effetto metallizzato opaco

Applicare DUNE OPACO in due strati con rullo di pelo corto o spatola inox. Ripassare l'ultimo strato ancora umido con spatola inox o in plastica, per ottenere una soffice damascatura.

Diluizione: 20% con acqua. Resa: 8-10 m²/l in due strati. Per maggiori informazioni consultare la scheda tecnica.

(EN) Decorative architectural trowel-on coating with matt metallic patterns

Apply DUNE OPACO in two layers with a short hair mohair roller or stainless steel trowel. Compress the second layer while wet with stainless steel or plastic trowel.

Dilution: 20% with water. Yield: 8-10 m²/l in two layers. For more information please check the technical data sheet.

(FR) Revêtement décoratif pour intérieurs à effet métallisé mat

Appliquer DUNE OPACO en deux couches avec rouleau de poil court ou truelle inox. Travailler la dernière couche encore humide avec truelle inox ou en plastique, pour obtenir un souple effet damasqué.

Dilution: 20% avec eau. Rendement: 8-10 m²/l en deux couches. Pour plus d'informations contrôler la fiche technique.

(DE) Dekorative Innenwandbeschichtung mit metallisiertem Matte-Effekt

Zwei Schichten DUNE OPACO mit einer Rolle oder einem Edelstahlspachtel auftragen. Die zweite Schicht mit Edelstahlspachtel über die noch feuchte Oberfläche streichen, und diese so bearbeiten, daß ein weicher Damast-Effekt erhalten wird.

Verdünnung: 20% mit Wasser. Ergiebigkeit: 8-10 m²/l in zwei Schichten. Für weitere Info bitte siehe technisches Merkblatt.

(ES) Revestimiento decorativo para interiores con efecto metalizado opaco

Aplicar DUNE OPACO en dos capas con rodillo de pelo corto o espátula inox. Repasar la última capa aún húmeda con una espátula inox o de plástico, para obtener un suave adamascado.

Dilución: 20% con agua. Rendimiento: 8-10 m²/l en dos capas. Para mayor información consultar la ficha técnica.



Novacolor Suomi

I colori dell'Architettura

www.novacolor.fi - info@novacolor.fi

+358 45 345 2345

freedot

05/2016

N000150

novacolorTM
I colori dell'Architettura

NOVACOLOR srl - 47122 Forlì - Italia
Tel +39 0543 401840 - fax +39 0543 414585
Via U. Aldrovandi, 10 - info@novacolor.it



NOVACOLOR is committed to reduce the environmental impact by producing friendly materials.

Made in Italy



**AZIENDA CON SISTEMA
DI GESTIONE QUALITÀ
CERTIFICATO DA DNV GL
= ISO 9001 =**

**COMPANY WITH
QUALITY SYSTEM
CERTIFIED BY DNV GL
= ISO 9001 =**