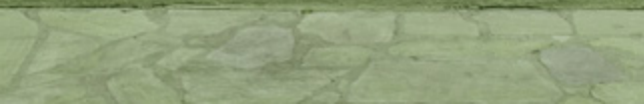


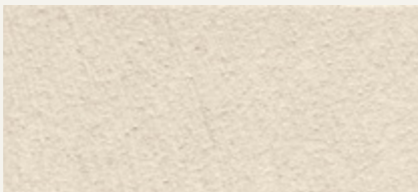
novacolor™  
I colori dell'Architettura

# Antiche Patine

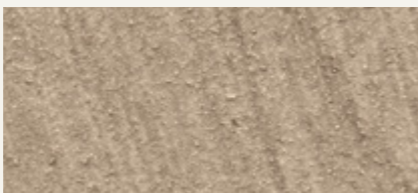
interior and exterior







FASE SILOSSANICA 6200



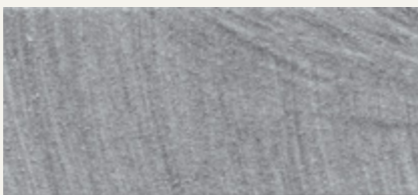
FASE SILOSSANICA 6201



FASE SILOSSANICA 6202



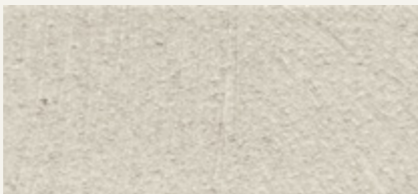
FASE SILOSSANICA 6203



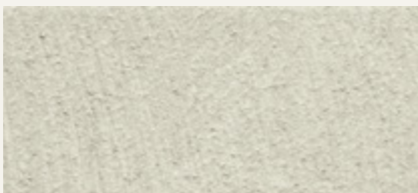
FASE SILOSSANICA 6204



FASE SILOSSANICA 6205



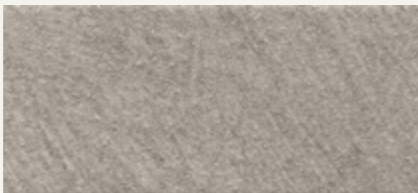
FASE SILOSSANICA 6206



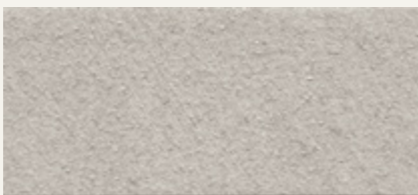
FASE SILOSSANICA 6207



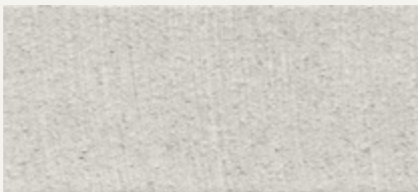
FASE SILOSSANICA 6208



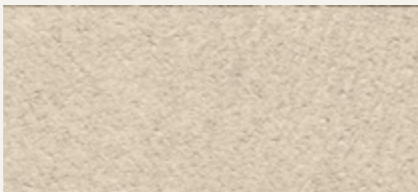
FASE SILOSSANICA 6209



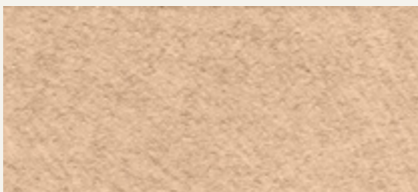
FASE SILOSSANICA 6210



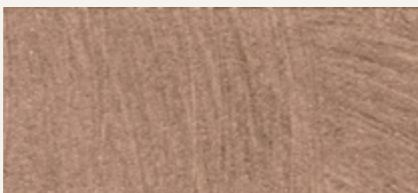
FASE SILOSSANICA 6211



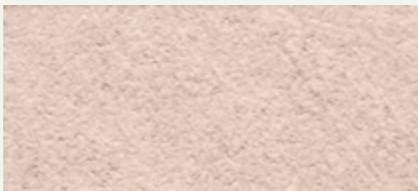
FASE SILOSSANICA 6212



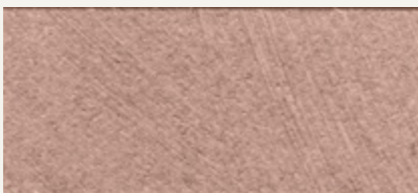
FASE SILOSSANICA 6213



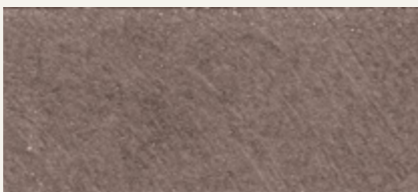
FASE SILOSSANICA 6214



FASE SILOSSANICA 6215



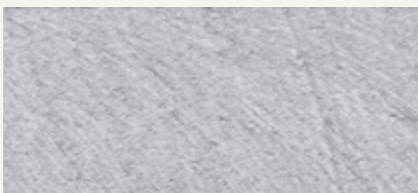
FASE SILOSSANICA 6216



FASE SILOSSANICA 6217



FASE SILOSSANICA 6218



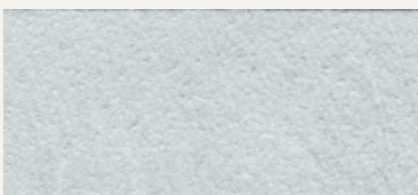
FASE SILOSSANICA 6219



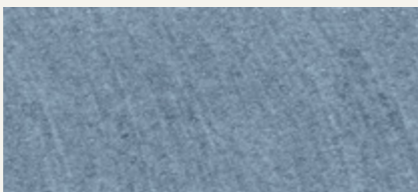
FASE SILOSSANICA 6220



FASE SILOSSANICA 6221



FASE SILOSSANICA 6222



FASE SILOSSANICA 6223

---

ANTICHE PATINE OFFRE UNE GAMME  
DE LASURES POUR INTÉRIEURS ET EXTÉRIEURS

**FASE SILOSSANICA**  
**Lasure siloxane pour application  
en intérieurs et extérieurs**

Diluer avec au maximum 100% d'eau.  
Appliquer une ou deux couches avec une  
brosse, une éponge ou un gant à poil.  
Rendement: 12-15 m<sup>2</sup>/l en deux couches.

**PATINA MINERAL**  
**Lasure aux silicates pour supports  
minéraux en intérieurs et extérieurs**

Diluer avec au maximum 20% d'eau.  
Appliquer une ou deux couches avec une  
brosse, une éponge ou un gant à poil.  
Rendement: 4-8 m<sup>2</sup>/l en deux couches.

Pour plus d'informations, consulter  
les fiches techniques respectives.



ANTICHE PATINE BIETET LAZUR-TECHNICK  
IM INNEN UND AUSSEN-BEREICH

**FASE SILOSSANICA**  
**Siloxan-Bindemittel für Lazur-Technick  
im Innen und Aussen-Bereich**

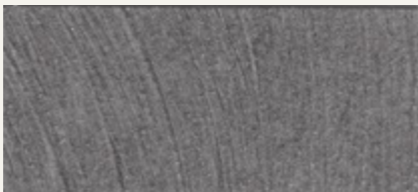
Verdünnung mit Wasser bis zu 100%.  
In ein oder zwei Schichten mit einem Pinsel,  
Schwamm oder mit Haarhandschuh auftragen.  
Ergiebigkeit: 12-15 m<sup>2</sup>/l in zwei Schichten.

**PATINA MINERAL**  
**Silicat-lazur für mineralische Oberflächen  
im Innen- und Außen**

Mit maximal 20% Wasser verdünnen.  
In ein oder zwei Schichten mit einem Pinsel,  
Schwamm oder mit Haarhandschuh auftragen.  
Ergiebigkeit: 4-8 m<sup>2</sup>/l in zwei Schichten.

Weitere Informationen finden Sie  
in den jeweiligen Datenblättern.

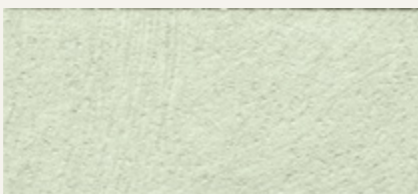
---



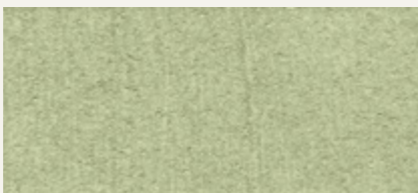
FASE SILOSSANICA 6224



FASE SILOSSANICA 6225



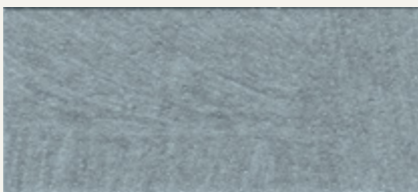
FASE SILOSSANICA 6226



FASE SILOSSANICA 6227



FASE SILOSSANICA 6228



PATINA MINERALE 6228



---

ANTICHE PATINE OFFRE UNA GAMMA  
DI VELATURE PER INTERNI ED ESTERNI

**FASE SILOSSANICA**  
**Veicolo silossanico per velature  
in interni ed esterni**

Diluire con massimo 100% di acqua.  
Applicare in uno o due strati con pennello,  
spugna o con guanto di pelo.  
Resa: 12-15 m<sup>2</sup>/l nei due strati.

**PATINA MINERALE**  
**Velatura ai silicati per supporti  
minerali in interni ed esterni**

Diluire con massimo 20% di acqua.  
Applicare in uno o due strati con pennello,  
spugna o con guanto di pelo.  
Resa: 4-8 m<sup>2</sup>/l nei due strati.

Per maggiori informazioni consultare  
le rispettive schede tecniche.



ANTICHE PATINE OFFERS A FULL RANGE  
OF COLOR WASHES FOR INTERIORS AND EXTERIORS

**FASE SILOSSANICA**  
**Siloxane color wash  
for interiors and exteriors**

Dilute with 100% of water max.  
Apply one or two layers with brush,  
sponge or glove.  
Yield: 12-15 m<sup>2</sup>/l in two layers.

**PATINA MINERALE**  
**Silicate color wash for mineral  
substrates in interiors and exteriors**

Dilute with 20% of water max.  
Apply one or two layers with brush,  
sponge or glove.  
Yield: 4-8 m<sup>2</sup>/l in two layers.

For more information please check  
the technical data sheets.

---







[www.novacolor.it](http://www.novacolor.it)

Novacolor Srl  
47122 Forlì - Italia  
Via U. Aldrovandi 10  
Tel +39 0543 401840  
Fax +39 0543 414585  
[info@novacolor.it](mailto:info@novacolor.it)

**MADE IN ITALY**

Cod: N000165  
04/2017

# Novacolor Suomi

I colori dell'Architettura

[www.novacolor.fi](http://www.novacolor.fi) - [info@novacolor.fi](mailto:info@novacolor.fi)

+358 45 345 2345

**AZIENDA CON SISTEMA  
DI GESTIONE QUALITÀ  
CERTIFICATO DA DNV GL  
= ISO 9001 =**

**COMPANY WITH  
QUALITY SYSTEM  
CERTIFIED BY DNV GL  
= ISO 9001 =**



NOVACOLOR is committed to reduce  
the environmental impact by producing  
friendly materials.